

## Technical Specifications

	Co-Botic™ 1700
Power rate	50W
Voltage	14.4V
Suction Power	2700Pa / 1600Pa (Power)/1200Pa (Standard)/600Pa(Quite)
Duration time	270 minutes user time
Charge time	240 minutes
Sound Level	73 dB / 67 dB/65dB
Speed	0,3m/s
Obstacle crossing ability	20 mm
Max. Slope	15°
Dust Bin volume	400 ml
Clean Area	Quiet: 160m²/ Standard: 120m²/ Power: 100m²
Clean efficiency	80%
RPM Main Brush	1300rpm
RPM Side Brush (clean)	230±15%/min
RPM Side Brush (recharging)	120±15%/min
Battery	16.8V / 5200 mAh
Dimension	350x350x98

## Seeing is believing

Schedule a demonstration today and discover how i-team can revolutionize your cleaning operation. We promise you'll be amazed



i-team Global HQ

Hoppenkuil 27B  
5626 DD  
Eindhoven  
Netherlands

hello@i-teamglobal.com  
+31 (0)40 266 24 00

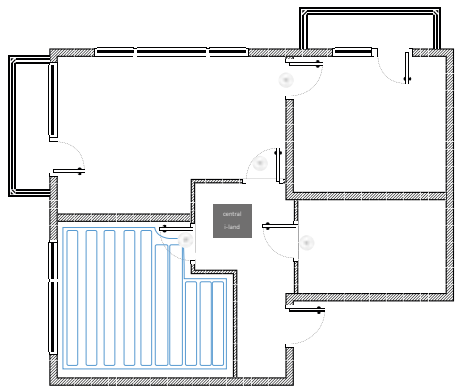
i-teamglobal.com

INQUIRE. INNOVATIE. INSPIRE

# Co-botic™ 1700

## My sense of direction is awesome.





**Building planning**

Setup multiple co-botic™ 1700 machines in a room. Leave it at the front door, start the machine and let it run. It automatically returns at the beginning



**Docking station**

For a central drop and go system the co-botic™ 1700 is available in combination with a central dump station. It automatically finds the route to the docking station and it will empty itself.

**Flexibility is key**

The power remote comes with the co-botic™ 1700. You can use it to directly start autonomous cleaning a room instead of using the app.

**Dustbin inside**

A small dust collector is integrated in the co-botic™ 1700. It can easily be switched.



**Using the app**

You can schedule the co-botic™ 1700 by using the i-team professional App. You can divide the room in several zones and get day to day information out of the App. Also creating virtual boundaries is a possibility to setup your device as precise as possible.



# Co-botic™ 1700



faster

I am faster because I keep working non stop for 270 minutes. After recharging I'll be up and running again for the next cleaning round.



cleaner

I keep going while you programmed me, I can program myself for the highest possible clean. Or I can follow your instructions.



greener

I am programmed to do the vacuuming as precise and efficiently as possible. Every bit of my energy is used for cleaning... nothing wasted. Where I am using 50W. in one hour, several alternatives are using 1000W



safer

No cables means the reduce of falling hazard. Even to be used overnight in dark areas without any trouble.



better

You are able to do other tasks in the meantime. You keep the trained human eye that will last to perfection. You can focus on the details.



scan me for app